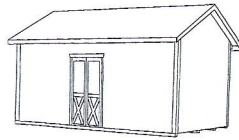


## Premier GABLE

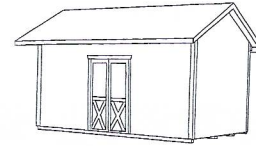
page 5 in catalog



Size	Premier	Deluxe	Vinyl
Siding	Smart Siding	Barn Siding	Vinyl Siding
Floor	2x6 Treated	2x6 Treated	2x6 Treated
8x8	\$3,440	\$3,872	\$4,980
8x10	\$3,780	\$4,229	\$5,525
8x12	\$4,100	\$4,623	\$5,970
10x10	\$4,320	\$5,221	\$6,185
10x12	\$4,790	\$5,626	\$6,790
10x14	\$5,135	\$6,014	\$7,295
10x16	\$5,650	\$6,623	\$7,930
10x20	\$6,600	\$7,778	\$9,150
12x14	\$6,275	\$7,505	\$8,800
12x16	\$7,000	\$8,140	\$9,665
12x18	\$7,450	\$8,639	\$10,200
12x20	\$7,850	\$9,285	\$10,685
12x24	\$8,685	\$10,435	\$11,680
14x16	\$8,060	\$9,469	\$10,935
14x20	\$9,185	\$10,813	\$12,370
16x20	\$10,155	\$11,905	\$13,635
16x24	\$11,655	\$13,250	\$15,005

## Ultimate GABLE

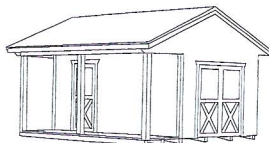
10" OVERHANG  
page 9 in catalog



Size	Premier	Deluxe	Vinyl
Siding	Smart Siding	Barn Siding	Vinyl Siding
Floor	2x6 Treated	2x6 Treated	2x6 Treated
8x10	\$4,350	\$5,038	\$6,335
8x12	\$4,685	\$5,258	\$6,840
10x10	\$4,895	\$5,825	\$7,080
10x12	\$5,405	\$6,287	\$7,750
10x14	\$5,850	\$6,749	\$8,320
10x16	\$6,390	\$7,442	\$9,060
10x18	\$6,930	\$8,088	\$9,755
10x20	\$7,505	\$8,749	\$10,480
12x14	\$7,115	\$8,403	\$9,935
12x16	\$7,930	\$9,133	\$10,880
12x18	\$8,385	\$9,721	\$11,520
12x20	\$8,890	\$10,487	\$12,170
14x16	\$9,065	\$10,582	\$12,275
14x20	\$10,420	\$12,109	\$13,940
16x20	\$11,560	\$13,322	\$15,370
16x24	\$12,790	\$14,813	\$16,985

## CABIN

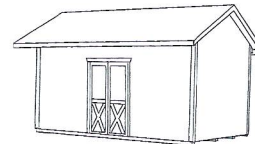
page 17 in catalog



Size	Premier	Deluxe	Vinyl
Siding	Smart Siding	Barn Siding	Vinyl Siding
Floor	2x6 Treated	2x6 Treated	2x6 Treated
6x10	\$4,595	\$5,332	\$7,505
6x12	\$4,810	\$5,521	\$7,775
8x10	\$4,910	\$5,762	\$7,805
8x12	\$5,505	\$6,256	\$8,565
8x14	\$6,105	\$6,875	\$9,320
10x10	\$5,800	\$7,096	\$8,865
10x12	\$6,315	\$7,484	\$9,615
10x14	\$6,970	\$8,062	\$10,505
10x16	\$7,560	\$8,833	\$11,330
10x20	\$8,910	\$10,482	\$13,150
12x14	\$8,360	\$10,046	\$12,230
12x16	\$9,125	\$10,834	\$13,230
12x18	\$9,785	\$11,700	\$14,115
12x20	\$10,385	\$12,361	\$14,955
14x16	\$10,715	\$12,624	\$15,490
14x20	\$12,250	\$14,388	\$17,375
16x20	\$13,955	\$16,294	\$19,085
16x24	\$15,430	\$17,975	\$21,040

## Ultimate GABLE

2' OVERHANG  
page 11 in catalog



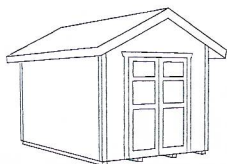
Size	Premier	Deluxe	Vinyl
Siding	Smart Siding	Barn Siding	Vinyl Siding
Floor	2x6 Treated	2x6 Treated	2x6 Treated
8x10	\$4,680	\$5,379	\$6,695
8x12	\$5,075	\$5,652	\$7,190
10x10	\$5,260	\$6,235	\$7,445
10x12	\$5,775	\$6,691	\$8,135
10x14	\$6,245	\$7,206	\$8,740
10x16	\$6,845	\$7,915	\$9,500
10x18	\$7,390	\$8,597	\$10,230
10x20	\$7,980	\$9,301	\$10,985
12x14	\$7,560	\$8,912	\$10,385
12x16	\$8,430	\$9,658	\$11,400
12x18	\$8,910	\$10,267	\$12,030
12x20	\$9,410	\$11,065	\$12,740
14x16	\$9,620	\$11,164	\$12,830
14x20	\$11,020	\$12,739	\$14,555
16x20	\$12,155	\$13,963	\$15,975
16x24	\$13,505	\$15,559	\$17,595

\*\*All prices are subject to change without notice.\*\*



## POTTING Shed

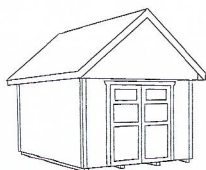
page 7 in catalog



Size	Premier	Pine	Vinyl
Siding	Smart Siding	Barn Siding	Vinyl Siding
Floor	2x6 Treated	2x6 Treated	2x6 Treated
8x8	\$3,530	\$4,082	\$5,150
8x10	\$3,890	\$4,455	\$5,690
8x12	\$4,250	\$4,891	\$6,165
10x10	\$4,460	\$4,933	\$6,390
10x12	\$4,970	\$5,788	\$7,050
10x14	\$5,375	\$6,235	\$7,600
10x16	\$5,865	\$6,865	\$8,225
10x20	\$6,870	\$8,046	\$9,545

## GARDEN Shed

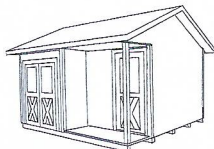
page 15 in catalog



Size	Premier	Pine	Vinyl
Siding	Smart Siding	Barn Siding	Vinyl Siding
Floor	2x6 Treated	2x6 Treated	2x6 Treated
10x12	\$6,060	\$7,069	\$8,960
10x14	\$6,560	\$7,605	\$9,620
10x16	\$7,180	\$8,366	\$10,500
10x18	\$7,800	\$9,112	\$11,310
10x20	\$8,445	\$9,883	\$12,160
12x14	\$8,000	\$9,463	\$11,500
12x16	\$8,945	\$10,298	\$12,640
12x18	\$9,450	\$10,981	\$13,380
12x20	\$10,030	\$11,852	\$14,135
14x16	\$10,240	\$11,957	\$14,260
14x20	\$11,770	\$13,679	\$16,215
16x20	\$13,065	\$15,081	\$17,880
16x24	\$14,475	\$16,777	\$19,780

## TACK

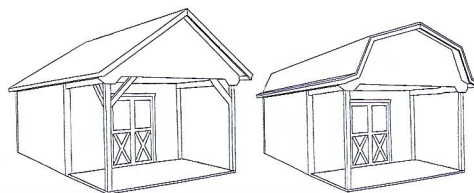
page 21 in catalog



Size	Premier	Pine	Vinyl
Siding	Smart Siding	Barn Siding	Vinyl Siding
Floor	2x6 Treated	2x6 Treated	2x6 Treated
8x10	\$4,275	\$4,906	\$6,285
8x12	\$4,755	\$5,536	\$6,930
10x10	\$5,010	\$5,998	\$7,200
10x12	\$5,445	\$6,450	\$7,775
10x14	\$6,005	\$6,943	\$8,480
10x16	\$6,500	\$7,610	\$9,160
10x18	\$7,040	\$8,188	\$9,810
10x20	\$7,520	\$8,802	\$10,500
12x14	\$7,200	\$8,377	\$10,355
12x16	\$7,810	\$9,143	\$11,135
12x18	\$8,380	\$9,847	\$11,885
12x20	\$8,980	\$10,571	\$12,660

## Outback CABINS Barn or Gable

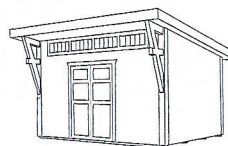
page 23 in catalog



Size	Premier	Pine	Vinyl
Siding	Smart Siding	Barn Siding	Vinyl Siding
Floor	2x6 Treated	2x6 Treated	2x6 Treated
8x12	\$4,770	\$5,431	\$7,055
8x14	\$5,055	\$5,820	\$7,610
10x10	\$5,230	\$6,077	\$7,550
10x12	\$5,585	\$6,581	\$8,300
10x14	\$6,000	\$7,048	\$8,940
10x16	\$6,605	\$7,726	\$9,695
10x18	\$7,205	\$8,434	\$10,480
10x20	\$7,710	\$9,127	\$11,255
12x14	\$7,685	\$9,033	\$10,815
12x16	\$8,510	\$9,962	\$11,870
12x18	\$9,140	\$10,734	\$12,520
12x20	\$10,240	\$11,863	\$13,215
14x16	\$9,890	\$11,579	\$13,430
14x20	\$11,040	\$12,960	\$15,230
16x20	\$12,060	\$14,057	\$16,810
16x24	\$13,340	\$15,622	\$18,630

## POOL Shed

page 27 in catalog



Size	Premier	Pine	Vinyl	5' Porch
Siding	Smart Siding	Barn Siding	Vinyl Siding	
Floor	2x6 Treated	2x6 Treated	2x6 Treated	
8x10	\$5,255	\$6,030	\$7,330	\$1,200
8x12	\$5,705	\$6,329	\$7,890	\$1,440
8x14	\$6,140	\$6,760	\$8,450	\$1,680
10x10	\$5,920	\$6,886	\$8,070	\$1,200
10x12	\$6,425	\$7,348	\$8,720	\$1,440
10x14	\$6,990	\$7,862	\$9,345	\$1,680
10x16	\$7,520	\$8,613	\$10,145	\$1,920
10x18	\$8,130	\$9,253	\$10,830	\$2,160
10x20	\$8,690	\$9,978	\$11,610	\$2,400
12x12	\$7,295	\$8,907	\$9,885	\$1,440
12x14	\$8,090	\$9,563	\$10,995	\$1,680
12x16	\$9,035	\$10,282	\$11,930	\$1,920
12x18	\$9,480	\$10,855	\$12,555	\$2,160
12x20	\$10,115	\$11,747	\$13,335	\$2,400
12x24	\$11,200	\$13,081	\$14,735	\$2,880

## CHICKEN Coops

page 53 in catalog



6x8	\$2,970
6x10	\$3,305
8x8	\$3,485
8x10	\$3,780
8x12	\$4,075

## SALT BOX Coops

page 53 in catalog



4x6	\$2,705
6x6	\$2,790

\*\*All prices are subject to change without notice.\*\*

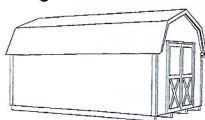


# STANDARD

*Barns*

4' WALL

page 29 in catalog



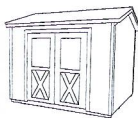
	Painted	Prebuilt
Siding	Smart Siding	Vinyl Siding
Floor	3/4 Treated	3/4 Treated
8x8	\$2,410	\$2,900
8x10	\$2,680	\$3,270
8x12	\$3,110	\$3,730
10x10	\$2,860	\$3,505
10x12	\$360	\$3,825
10x14	\$3,670	\$4,355
10x16	\$4,030	\$5,895
10x18	\$4,490	\$5,445
10x20	\$4,950	\$5,985
12x12	\$3,710	\$4,900
12x14	\$4,275	\$5,590
12x16	\$4,840	\$6,245
12x18	\$5,405	\$6,905
12x20	\$5,825	\$7,455
12x24	\$6,665	\$8,505

# STANDARD

*Barns or Gables*

6' WALL

page 3 & 29 in catalog

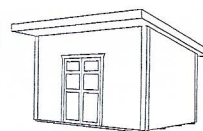


	Painted	Prebuilt
Siding	Smart Siding	Vinyl Siding
Floor	3/4 Treated	3/4 Treated
8x8	\$2,570	\$3,145
8x10	\$2,860	\$3,525
8x12	\$3,310	\$4,060
8x14	\$3,545	\$4,375
10x10	\$3,060	\$3,700
10x12	\$3,330	\$4,310
10x14	\$3,810	\$4,710
10x16	\$4,290	\$5,300
10x18	\$4,770	\$5,890
10x20	\$5,250	\$6,470
10x24	\$6,145	\$7,495
12x12	\$3,900	\$5,335
12x14	\$4,525	\$6,050
12x16	\$5,105	\$6,720
12x18	\$5,690	\$7,430
12x20	\$6,130	\$8,020
12x24	\$7,005	\$9,215
12x28	\$7,710	\$9,900
12x30	\$8,215	\$10,600

# STANDARD

*Shed Roof*

page 25 in catalog



	Painted	Prebuilt
Siding	Smart Siding	Vinyl Siding
Floor	3/4 Treated	3/4 Treated
8x8	\$2,695	\$3,305
8x10	\$3,005	\$3,700
8x12	\$3,475	\$4,260
8x14	\$3,720	\$4,595
10x10	\$3,215	\$3,885
10x12	\$3,495	\$4,525
10x14	\$4,000	\$4,945
10x16	\$4,505	\$5,565
10x18	\$5,005	\$6,185
10x20	\$5,515	\$6,795
10x24	\$6,450	\$7,865
12x12	\$4,145	\$5,605
12x14	\$4,755	\$6,350
12x16	\$5,370	\$7,055
12x18	\$5,985	\$7,800
12x20	\$6,450	\$8,420
12x24	\$8,160	\$9,675
12x28	\$8,860	\$10,395
12x30	\$9,575	\$11,130

## STANDARD SERIES PREBUILT PRICING

### Standard Features:

- Treated runners
- 3/4" treated plywood
- 24" O.C. wall studs
- LP smart siding (painted 2 colors)
- 24" O.C. trusses
- 7/16" OSB sheathing
- 30 year dimensional shingles

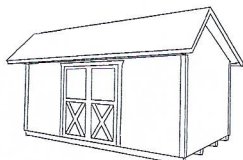
## OPTIONAL UPGRADES

- 16" O.C. studs ..... +2%
- 5/8" CDX sheathing ..... +3%
- 2x6 Tongue & groove floor ..... \$2 per sq. ft.
- 4/12 roof pitch w/overhang ..... \$2 per sq. ft.
- 6/12 roof pitch w/overhang ..... \$3 per sq. ft.
- Metal roof ..... \$1.50 per sq. ft.
- Built on Site ..... +5%

Note: All standard series 12' wide buildings are measured eave to eave.

# SALT BOX

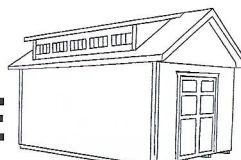
page 24 in catalog



Size	Premier	Pine	Vinyl
Siding	Smart Siding	Barn Siding	Vinyl Siding
Floor	2x6 Treated	2x6 Treated	2x6 Treated
8x8	\$3,635	\$4,045	\$5,165
8x10	\$4,035	\$4,518	\$5,775
8x12	\$4,360	\$4,943	\$6,165
10x10	\$4,750	\$5,316	\$6,615
10x12	\$5,075	\$5,841	\$7,025
10x14	\$5,420	\$6,450	\$7,545
10x16	\$5,940	\$7,048	\$8,175
10x20	\$6,945	\$8,314	\$9,460
12x14	\$6,765	\$8,030	\$9,275
12x16	\$7,390	\$8,629	\$10,035
12x18	\$7,805	\$9,143	\$10,500
12x20	\$8,205	\$9,626	\$11,085

# COTTAGE

page 13 in catalog



Size	Premier	Pine	Vinyl
Siding	Smart Siding	Barn Siding	Vinyl Siding
Floor	2x6 Treated	2x6 Treated	2x6 Treated
8x10	\$5,315	\$6,046	\$7,330
8x12	\$5,715	\$6,340	\$7,960
10x10	\$5,850	\$6,886	\$8,070
10x12	\$6,465	\$7,379	\$8,790
10x14	\$6,990	\$7,862	\$9,410
10x16	\$7,520	\$8,613	\$10,215
10x18	\$8,060	\$9,322	\$10,965
10x20	\$8,760	\$10,057	\$11,675
12x12	\$7,260	\$9,117	\$10,085
12x14	\$8,230	\$9,495	\$11,130
12x16	\$9,035	\$10,282	\$12,005
12x18	\$9,545	\$10,855	\$12,705
12x20	\$10,185	\$11,758	\$13,335
12x24	\$11,370	\$13,212	\$14,895

# GREEN HOUSE

*Prebuilt Only*

page 55 in catalog

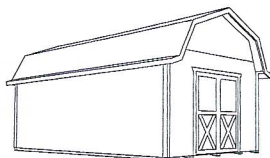
Size	Premier
Siding	Smart Siding
Floor	2x6 Treated
8x8	\$4,800
8x10	\$4,760
8x12	\$5,975
10x10	\$6,150
10x12	\$6,660
10x14	\$7,190
10x16	\$7,770
10x20	\$8,620

\*\*All prices are subject to change without notice.\*\*



## BARN Style

page 30 in catalog



Size	Premier	Pine	Vinyl
Siding	Smart Siding	Barn Siding	Vinyl Siding
Floor	2x6 Treated	2x6 Treated	2x6 Treated

### 4' WALL

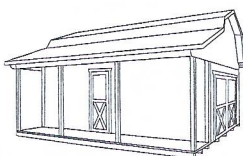
8x8	\$3,160	\$3,615	\$4,490
8x10	\$3,480	\$3,951	\$4,910
8x12	\$3,705	\$4,150	\$5,190

### 6' WALL

10x10	\$4,125	\$4,812	\$5,975
10x12	\$4,560	\$5,179	\$6,365
10x14	\$4,965	\$5,699	\$6,890
10x16	\$5,375	\$6,277	\$7,420
10x20	\$6,215	\$7,290	\$8,435
12x14	\$6,490	\$7,610	\$9,135
12x16	\$7,220	\$8,314	\$9,705
12x18	\$7,710	\$8,860	\$10,600
12x20	\$8,205	\$9,411	\$11,340
14x16	\$8,260	\$9,726	\$11,295
14x20	\$9,345	\$11,017	\$12,460
16x20	\$10,355	\$12,115	\$13,830
16x24	\$11,465	\$13,317	\$15,080

## PORCH Barn

page 33 in catalog



Size	Premier	Pine	Vinyl
Siding	Smart Siding	Barn Siding	Vinyl Siding
Floor	2x6 Treated	2x6 Treated	2x6 Treated
10x12	\$6,825	\$7,778	\$10,000
10x14	\$7,335	\$8,398	\$10,715
10x16	\$8,025	\$9,332	\$11,555
10x20	\$9,140	\$10,634	\$13,085
12x14	\$8,760	\$10,219	\$12,225
12x16	\$9,405	\$11,191	\$13,065
12x18	\$10,400	\$12,199	\$14,210
12x20	\$11,450	\$13,028	\$15,230
14x16	\$11,340	\$13,180	\$15,365
14x20	\$12,720	\$14,834	\$17,040
16x20	\$13,925	\$16,294	\$18,630
16x24	\$15,440	\$17,916	\$20,400

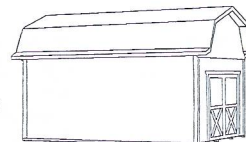
### Sidewall Height on Barn Styles

4' tall on 8' wide barns

6' tall on 10'-12'-14'-16' wide barns

## HI-WALL

page 31 in catalog

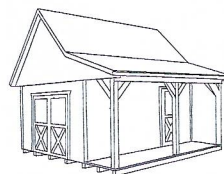


Size	Premier	Pine	Vinyl
Siding	Smart Siding	Barn Siding	Vinyl Siding
Floor	2x6 Treated	2x6 Treated	2x6 Treated
10x12	\$4,950	\$5,647	\$7,220
10x14	\$5,330	\$6,103	\$7,790
10x16	\$5,855	\$6,691	\$8,405
10x20	\$6,660	\$7,741	\$9,470
12x14	\$6,675	\$7,936	\$9,470
12x16	\$7,530	\$8,639	\$10,160
12x18	\$8,180	\$9,458	\$11,070
12x20	\$8,500	\$9,878	\$11,550
12x24	\$9,315	\$10,750	\$12,580
14x16	\$8,565	\$10,025	\$11,700
14x20	\$9,680	\$11,380	\$13,060
14x24	\$10,875	\$12,776	\$14,480
16x20	\$10,770	\$12,556	\$14,270
16x24	\$12,150	\$13,784	\$15,575

## A-Frame CABIN

4' PORCH

page 19 in catalog



Size	Premier	Pine	Vinyl
Siding	Smart Siding	Barn Siding	Vinyl Siding
Floor	2x6 Treated	2x6 Treated	2x6 Treated
10x12	\$7,610	\$9,033	\$11,620
10x14	\$8,400	\$10,099	\$12,740
10x16	\$9,455	\$11,086	\$13,760
10x18	\$10,295	\$11,957	\$14,565
10x20	\$11,145	\$12,923	\$15,980
12x14	\$10,475	\$12,645	\$14,840
12x16	\$11,410	\$13,632	\$16,100
12x18	\$12,305	\$14,729	\$17,200
12x20	\$13,080	\$15,569	\$18,210
14x16	\$13,910	\$16,435	\$19,510
14x20	\$15,960	\$18,766	\$21,855
14x24	\$18,170	\$21,213	\$24,020

### 6' PORCH, FULL LOFT

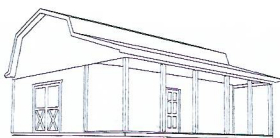
Size	Premier	Deluxe	Vinyl
Siding	Smart Siding	Barn Siding	Vinyl Siding
Floor	2x6 Treated	2x6 Treated	2x6 Treated
16x20	\$20,000	\$23,165	\$26,105
16x24	\$22,100	\$24,685	\$28,765
16x28	\$24,185	\$27,870	\$30,810
16x30	\$26,480	\$29,060	\$31,705

\*\*All prices are subject to change without notice.\*\*



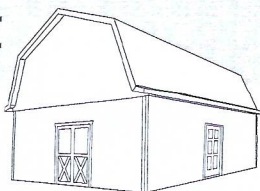
# HI-LOFT BARN

pages 35-43 in catalog



Size	Premier	Pine	Vinyl	4' Porch	6' Porch
Siding	Smart Siding	Barn Siding	Vinyl Siding	Add 5% for Vinyl	
Floor	2x6 Treated	2x6 Treated	2x6 Treated		
12x16	\$9,620	\$11,054	\$13,715	\$2,415	\$3,005
12x18	\$10,710	\$12,409	\$14,950	\$2,735	\$3,395
12x20	\$11,135	\$12,970	\$15,615	\$3,365	\$4,090
12x24	\$12,225	\$14,136	\$17,025	\$3,980	\$4,850
14x16	\$11,210	\$13,165	\$15,815	\$2,415	\$3,005
14x18	\$11,970	\$14,068	\$16,755	\$2,735	\$3,395
14x20	\$12,720	\$14,971	\$17,690	\$3,365	\$4,090
14x24	\$14,315	\$16,845	\$19,650	\$3,980	\$4,850
14x28	\$15,915	\$18,703	\$21,605	\$4,590	\$5,600
14x30	\$17,520	\$19,669	\$22,580	\$5,180	\$6,280
				6' Porch	8' Porch
16x20	\$14,585	\$16,656	\$18,090	\$4,485	\$5,220
16x24	\$16,035	\$18,121	\$19,905	\$5,440	\$6,310
16x28	\$17,480	\$19,669	\$21,710	\$6,230	\$7,235
16x30	\$18,290	\$20,436	\$22,730	\$6,710	\$7,755
16x32	\$19,025	\$21,029	\$23,630	\$7,110	\$8,270
20x20	\$20,610	\$23,045	\$25,060	\$4,485	\$5,220
20x24	\$22,890	\$25,733	\$27,845	\$5,440	\$6,310
20x28	\$25,035	\$28,122	\$30,460	\$6,230	\$7,235
20x30	\$26,230	\$29,513	\$31,905	\$6,720	\$7,755
20x32	\$27,345	\$31,114	\$33,280	\$7,110	\$8,270

12' wide—build height 15'6", loft height 6'8"  
 14' wide—build height 16'7", loft height 6'10"  
 16' wide—build height 17', loft height 7'  
 20' wide—build height 17'6", loft height 7'4"  
 24' wide—build height 18'6", loft height 8'6"



## 24' HI-LOFT

FLOOR NOT INCLUDED

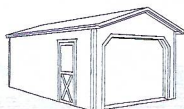
pages 45-47 in catalog

Size	Premier	Deluxe	8' Overhang	10' Overhang
Siding	SmartSiding	Barn Siding		
24x24	\$25,970	\$29,356	\$4,520	\$5,290
24x26	\$27,425	\$31,015	\$5,145	\$5,960
24x28	\$28,865	\$32,621	\$5,750	\$6,630
24x30	\$30,315	\$34,264	\$6,370	\$7,335
24x32	\$31,800	\$35,918	\$6,990	\$8,010
24x34	\$33,220	\$37,493	\$7,610	\$8,700
24x36	\$34,670	\$39,168	\$8,230	\$9,380
24x40	\$39,570	\$44,486	\$9,335	\$10,500

## Quick GARAGE

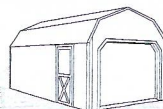
page 52 in catalog

### GABLE



Size	SmartSide	Vinyl
12x20	\$8,260	\$10,760
12x24	\$9,160	\$11,670

### BARN



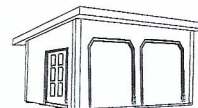
Size	SmartSide
12x20	\$7,470
12x24	\$8,195

Quick Garages are measured outside eave to eave.

\*\*All prices are subject to change without notice.\*\*

## Mono GARAGE

page 51 in catalog



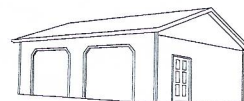
Size	Premier	Vinyl
Siding	Smart Siding	Vinyl Siding
Floor	2x6 Treated	2x6 Treated
14x20	\$14,430	\$17,510
14x24	\$17,255	\$20,915
14x28	\$19,430	\$24,440
14x30	\$21,170	\$26,630
16x20	\$16,710	\$20,230
16x24	\$19,190	\$24,185
16x28	\$22,710	\$27,640
16x30	\$23,990	\$29,750
16x32	\$25,205	\$31,860
20x20	\$20,420	\$25,670
20x24	\$23,990	\$29,750
20x28	\$27,750	\$35,030
20x30	\$29,270	\$36,470
20x32	\$31,350	\$39,030

### NO FLOOR

24x24	\$25,720	\$31,465
24x28	\$28,995	\$36,920
24x30	\$30,520	\$38,390
24x32	\$32,630	\$39,545
24x36	\$36,950	\$44,720
24x40	\$41,270	\$49,910

## Gable GARAGE

page 49 in catalog



Size		
Siding	Smart Siding	Vinyl Siding
Floor	No Floor	No Floor
20x20	\$14,105	\$18,190
20x22	\$14,585	\$18,765
20x24	\$15,065	\$19,565
20x26	\$15,525	\$20,255
20x28	\$16,010	\$20,930
20x30	\$16,475	\$21,610
20x32	\$16,950	\$22,170
24x24	\$16,445	\$21,180
24x26	\$16,970	\$21,940
24x28	\$17,560	\$22,710
24x30	\$18,150	\$23,345
24x32	\$19,060	\$24,340



# OPTIONS

## LOFTS

4' Loft in 8' and 10' wide barns .....	\$160
4' Loft in 12' wide barns .....	\$250
4' Loft in 14' wide barns .....	\$330
4' Loft in 16' wide barns .....	\$395

## WINDOWS

24"x27" Window with screen .....	\$85
24"x36" Window with screen and grids .....	\$100
2' wide by 3' high	
30"x36" Window with screen and grids .....	\$110
24"x36" Vinyl insulated window .....	\$275
2' wide by 3' high	
30"x36" Vinyl insulated window .....	\$295
Transom windows in doors .....	\$75 each
Transom windows above windows .....	\$85 each
Insulated Transom windows .....	\$150 each
14" Octagon window .....	\$65

## WINDOW ACCESSORIES

Shutters (Wood or Vinyl) .....	\$50
2' Cedar or Poly Flower Boxes .....	\$50
4' Cedar Flower Boxes .....	\$95

## OVERHEAD GARAGE DOORS

	<i>insulated</i>	<i>windows</i>
8x7 .....	\$1,595	\$350
9x7 .....	\$1,795	\$395
10x7 .....	\$1,915	\$420
Decorative Hardware .....	\$100	

*Garage Doors – subcontracted to others,  
installed shortly after build.*

## DOORS

1 1/4" Fiberglass slab door .....	\$160
1 1/4" Fiberglass double slab doors .....	\$320
White steel door with pre-hung Jamb, Keyed lockset and Dead Bolt .....	\$525
Painted steel doors .....	\$1,050
Single wood door .....	\$110

## MISCELLANEOUS

Ramps for standard size doors .....	\$250
8' Wide Ramp .....	\$315
9' Wide Ramp .....	\$385
Decorative Hinges (per door) .....	\$25
Ridge vent per 4' section .....	\$25
Steel Barn Anchors (set of four) .....	\$180
Steel Roofing (excluding Barn Styles) .....	
.....	\$3.00 per sq. ft.
Steel Roofing (Barn Styles) .....	\$4.00 per sq. ft.
Weather Vanes .....	\$65
Felt Paper .....	\$.60 per sq. ft.
Y Braces (per post) .....	\$150
Eyebrow Roof .....	\$100 per ft.

## CUPOLAS

	<i>Cedar</i>	<i>White Vinyl</i>	<i>Vinyl w/Window</i>	<i>For Steel Roof add:</i>
24" ... \$385 ....	\$450 .....	\$550 .....	\$110	
30" ... \$495 ....	\$625 .....	\$775 .....	\$135	

Waste removal from job site .....	\$35
-----------------------------------	------

**\*\*All prices are subject to change without notice.\*\***